

MONITORED Rack PDU Specification

CUSTOMER SIGNATURE _____

DATE APPROVED _____

Customer agrees to this specific PowerLok configuration

PowerLok Configuration

Model: PL7351

RACK PDU, BASIC, 72", 30A 208V 1PH (5.0 kW), 32-C13, 10FT WHIP, NEMA L6-30P, CARBON

POWER	30A 208V 1PH 5.0 kW
UNIT LENGTH	72 IN
PLUG TYPE	NEMA L6-30P
WHIP LENGTH	10 FT
RECEPTACLES	32-C13
CORDLOK	NONE
MONITORING	NONE
120V TECH POWER	NONE
COLOR	CARBON

PowerLok Universal Specification

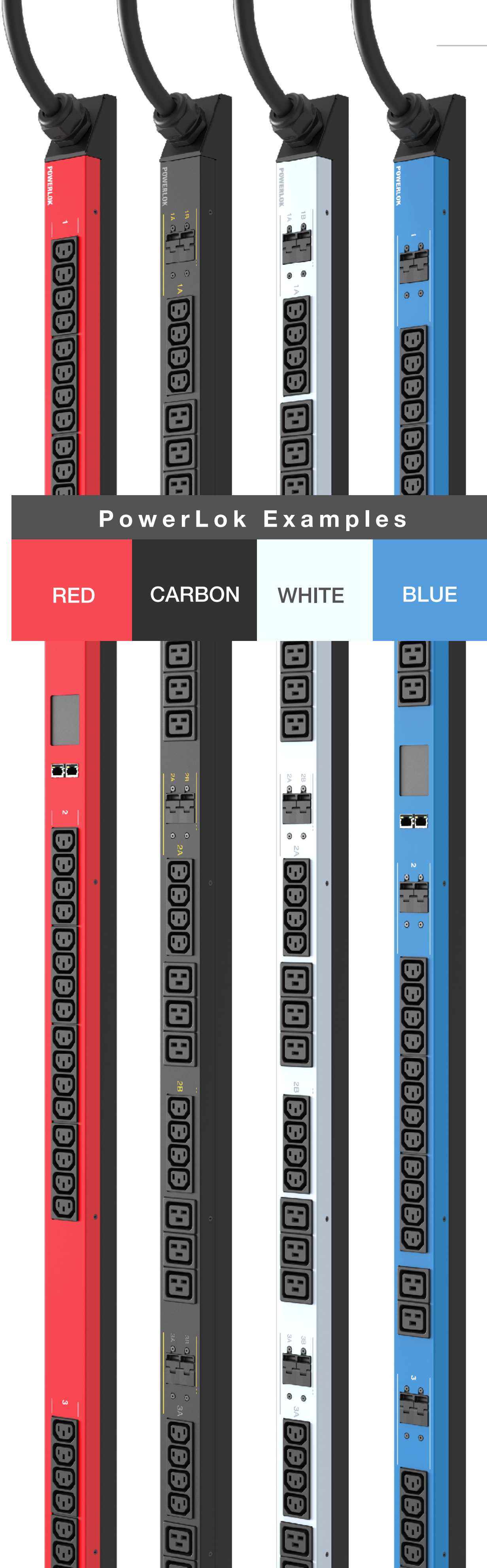
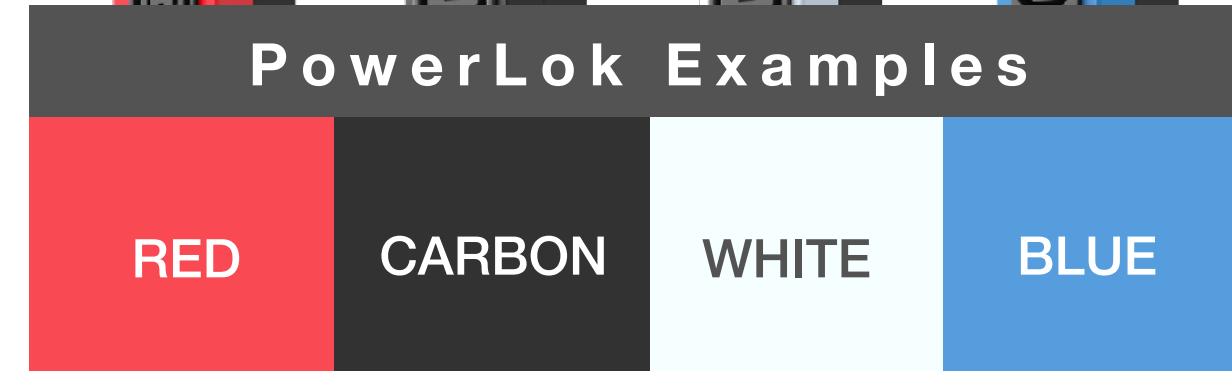
Quote:

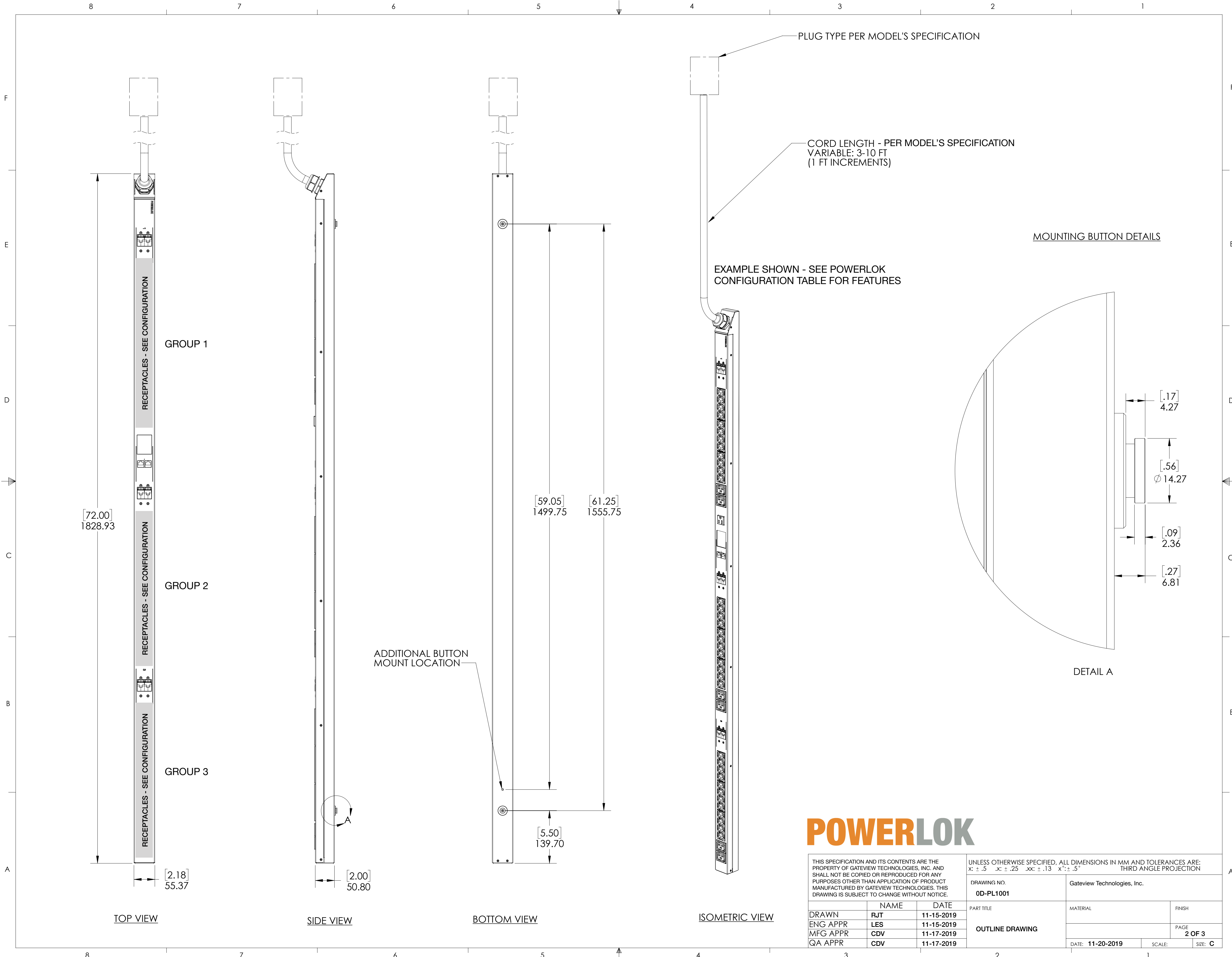
Customer:

Order No.:

Order Qty.:

Over Current Protection	20A magnetic breakers on 30A models.
Power Whip	20A: 12AWG 3 or 5 wire & 30A: 10AWG 3 or 5 wire.
Operating Temperature	Full nameplate continuous operation: 0-50C (32-122F)
Heavy Steel - Powder Coat Color	See PowerLok Configuration Table for Color
Rack PDU Type	Vertical Rack-mount
Toolless Mounting: Center Spacing	61.25in (12.25 spacing standard). 59.05 mounting option available on Rack PDU.
Assembled in the USA	Yes - with local and off-shore sourced components
Product Warranty	3-year from date of shipment, repair or replace.
Certification/Agency Approvals	TUV Certified to UL/CSA 60950-1 with NOM Addendum for Mexico, FCC Part 15 Class A Conformance, RoHS Compliant
Operating Environment	0-50C (32-122F), 5-95% Relative Humidity, 0-10,000ft (0-3000 meters) Elevation.
Storage Environment	-25-65C (32-122F), 5-95% Relative Humidity, 0-10,000ft (0-3000 meters) Elevation.
Chassis Dimensions (LxWxD)	72"L x 2.18"W x 2.0"D
Package Dimensions (LxWxD)	84.0"L x 22.0"W x 5.0"D (4-Pack) 84.0"L x 11.0"W x 5.0"D (2-Pack) 84.0"L x 7.0"W x 5.0"D (1-Pack)
Rack PDU Weight	15.0 lbs. (Actual weight varies slightly based on configuration)
Packaged Weight	17.0 lbs (1 unit - actual weight varies slightly based on configuration)





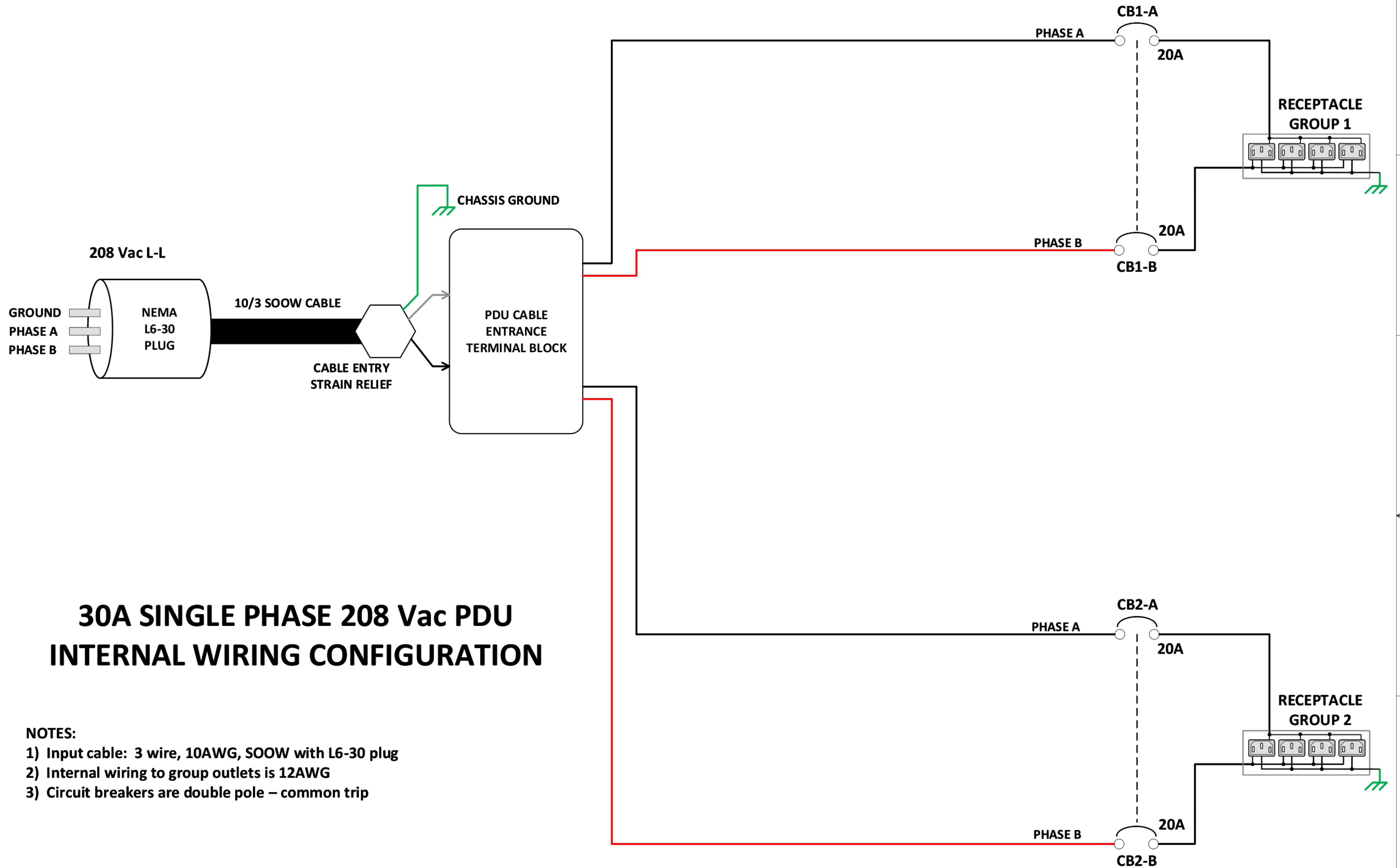
POWERLOK

THIS SPECIFICATION AND ITS CONTENTS ARE THE PROPERTY OF GATEVIEW TECHNOLOGIES, INC. AND SHALL NOT BE COPIED OR REPRODUCED FOR ANY PURPOSES OTHER THAN APPLICATION OF PRODUCT MANUFACTURED BY GATEVIEW TECHNOLOGIES. THIS DRAWING IS SUBJECT TO CHANGE WITHOUT NOTICE.			UNLESS OTHERWISE SPECIFIED, ALL DIMENSIONS IN MM AND TOLERANCES ARE: x: ± .5 .x: ± .25 .xx: ± .13 x': ± .5"		
DRAWING NO. 0D-PL1001			Gateview Technologies, Inc.		
DRAWN RJT		DATE 11-15-2019	PART TITLE OUTLINE DRAWING		FINISH
ENG APPR LES		DATE 11-15-2019	MATERIAL		PAGE 2 OF 3
MFG APPR CDV		DATE 11-17-2019	SCALE:		SIZE: C
QA APPR CDV		DATE 11-17-2019	DATE: 11-20-2019		

30A SINGLE PHASE 208 Vac PDU INTERNAL WIRING CONFIGURATION

NOTES:

- 1) Input cable: 3 wire, 10AWG, SOOW with L6-30 plug
- 2) Internal wiring to group outlets is 12AWG
- 3) Circuit breakers are double pole – common trip



POWERLOK

THIS SPECIFICATION AND ITS CONTENTS ARE THE PROPERTY OF GATEVIEW TECHNOLOGIES, INC. AND SHALL NOT BE COPIED OR REPRODUCED FOR ANY PURPOSES OTHER THAN APPLICATION OF PRODUCT MANUFACTURED BY GATEVIEW TECHNOLOGIES. THIS DRAWING IS SUBJECT TO CHANGE WITHOUT NOTICE.		UNLESS OTHERWISE SPECIFIED, ALL DIMENSIONS IN MM AND TOLERANCES ARE: x: ± .5" .x: ± .25" .xx: ± .13" x": ± .5"	
DRAWING NO. WC-PL1011		Gateview Technologies, Inc. INTERNAL WIRING CONFIGURATION	
NAME	DATE	PART TITLE	FINISH
DRAWN LES	4-20-2019	30A SINGLE PHASE 208 Vac PDU	PAGE 3 OF 3
ENG APPR MHG	4-20-2019		
MFG APPR CDV	4-21-2019		
QA APPR CDV	4-21-2019		
DATE: 4-20-2019		SCALE:	SIZE: C