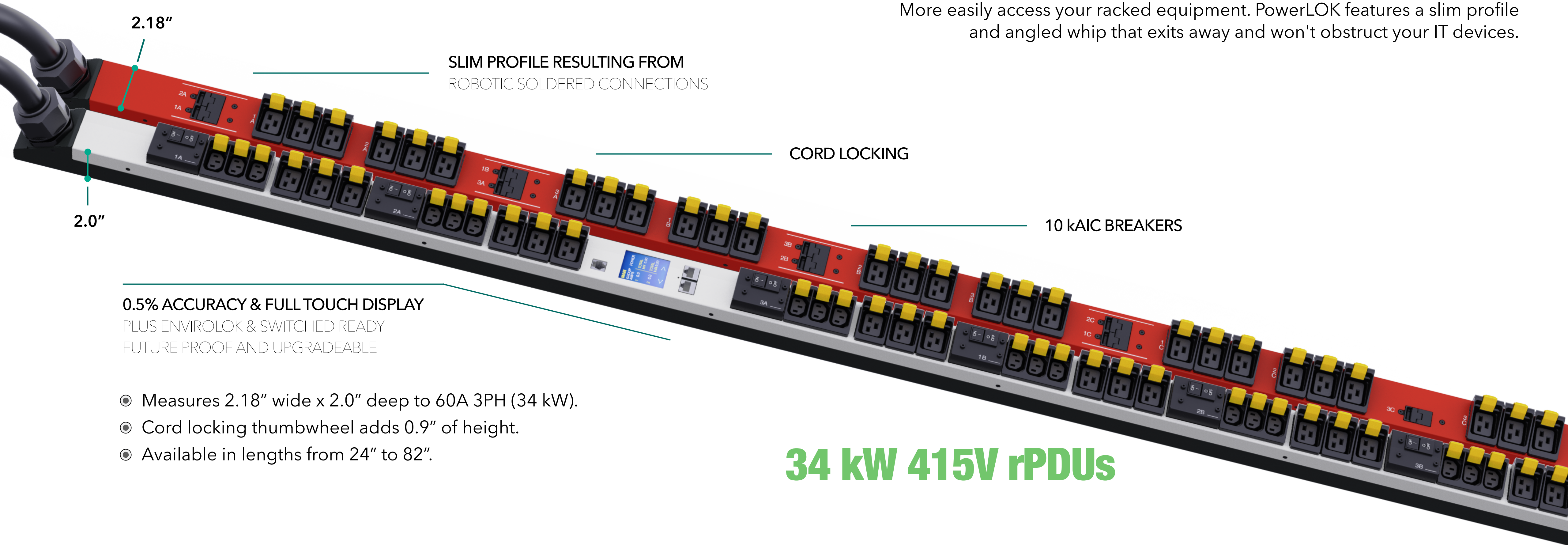


# PowerLOK 8000 Series | In-Rack Power

With 15 power types utilizing a single automated build method, PowerLOK rPDUs are set apart for rack power distribution. PowerLOK was conceptualized for 3-phase power distribution with input from industry leaders such as: Oracle, Digital Realty and Hubbell.

## Industry leading power density to 34 kW per rPDU

More easily access your racked equipment. PowerLOK features a slim profile and angled whip that exits away and won't obstruct your IT devices.



2.18"  
SLIM PROFILE RESULTING FROM ROBOTIC SOLDERED CONNECTIONS

2.0"

CORD LOCKING

10 kAIC BREAKERS

0.5% ACCURACY & FULL TOUCH DISPLAY  
PLUS ENVIROLOK & SWITCHED READY  
FUTURE PROOF AND UPGRADEABLE

- Measures 2.18" wide x 2.0" deep to 60A 3PH (34 kW).
- Cord locking thumbwheel adds 0.9" of height.
- Available in lengths from 24" to 82".

## 34 kW 415V rPDUs

Gateview Technologies is a Made in America rPDU manufacturer that's providing a more robust rPDU, customizable configurations, and a longer standard warranty.

## 15 power types, 1 build method

Highly tooled components maintain quality and allow rapid build-to-order in the USA.

- Currently up to 34kW in a slim 2.2 x 2" single rPDU.
- Multiple lengths from 24" to 88" vertical and 1U/2U horizontal rack mount.

### 8100-8300 SERIES | 120/208V

- 20-60A 120V 1PH
- 20-60A 208V 1PH
- 20-60A 120/208V WYE 3PH
- Up to 17.2 kW's

### 8400-8600 SERIES | 208/240V

- 30A 208/240V DELTA 3PH
- 50A 208/240V DELTA 3PH
- 60A 208/240V DELTA 3PH
- Up to 17.2 kW's

### 8700-8800 SERIES | 240/415V

- 20A 240/415V WYE 3PH
- 30A 240/415V WYE 3PH
- 60A 240/415V WYE 3PH
- Up to 34 kW's

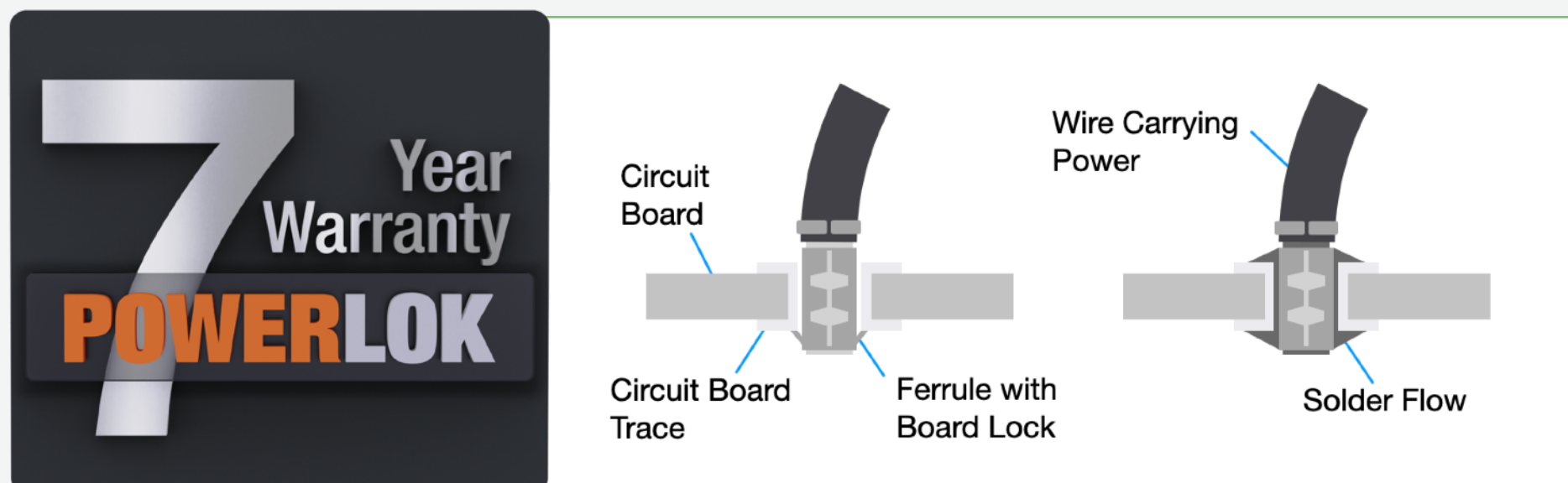
Ask about 9000 Series, up to 72kW in a single rPDU.

## Advanced testing & quality

With increased rack temperatures and temperature cycling, inferior internal electrical connections no longer provide reliability. PowerLok's patented construction and machine soldered rPDUs enable an industry leading 7-year Warranty.

- 100% automated crimp and robotically soldered.
- 36 quality procedures for every PDU.
- Fully automated production testing.
- TAA and built-to-order in the USA.

Patented design for automation technology



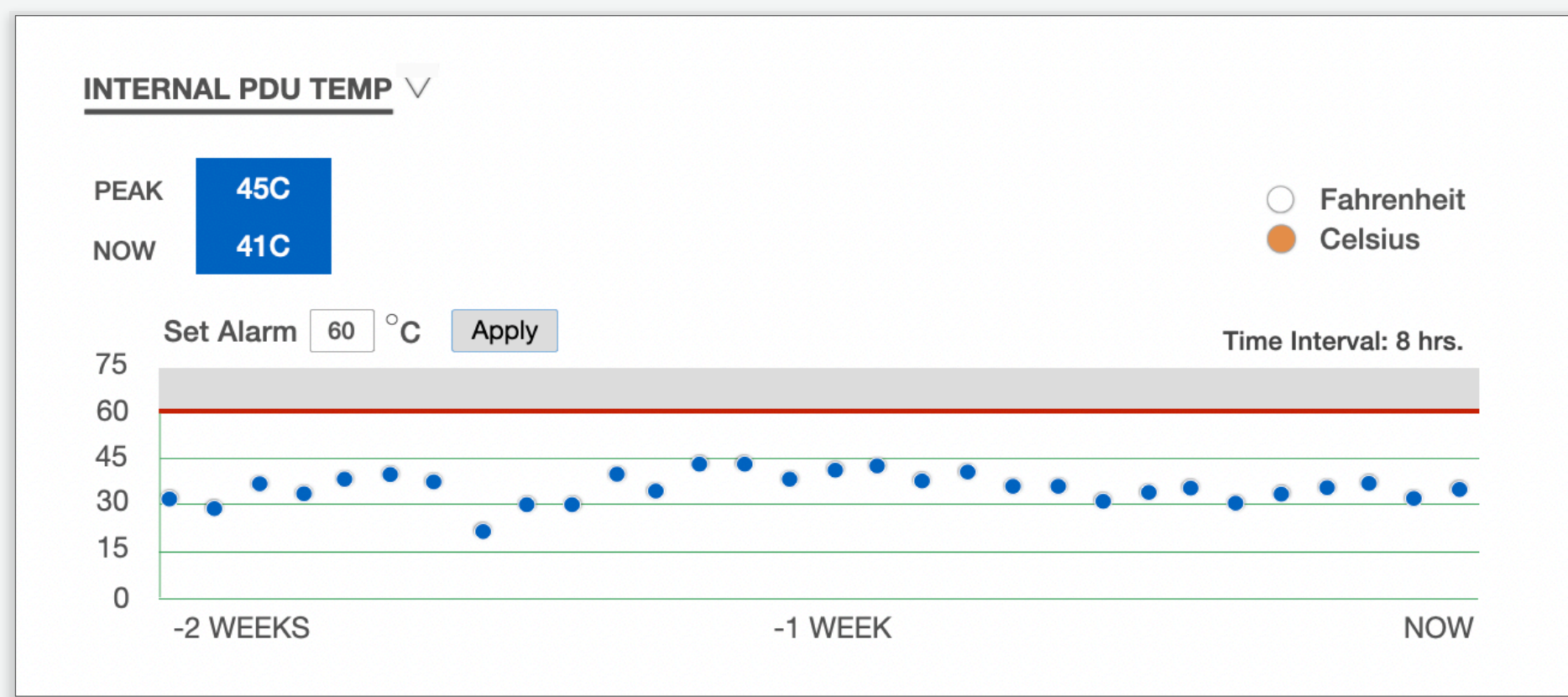
**7 Year Warranty**  
**POWERLOK**

Machine applied wire ferrules, soldered contact points and half the connections versus typical PDUs. Evaluated to be 3X less likely to experience power connection failure. Independent study done by mTechnology.

Since 1996, mTechnology has applied Probabilistic Risk Assessment (PRA) for high-availability electric power suitable for computers and mission-critical facilities.

## Report rPDU internal temperature for high-heat racks

Internal rack PDU temperature monitoring is standard on every intelligent rack PDU. For rack temperature and humidity monitoring, add a 2, 3, or 4 pack of EnviroLOK sensors.



## PowerLOK 8000 Series | In-Rack Power

With advanced construction and automated build method, PowerLok is set apart from its competition. PowerLok has the most compact power dense form for high performance computing. With 100% robotically soldered connections, you have confidence that you have the most reliable product available

### Vertical Stacking

Vertical stacking 36" and 41" rPDUs increases available power in a vertical footprint. Presented here:

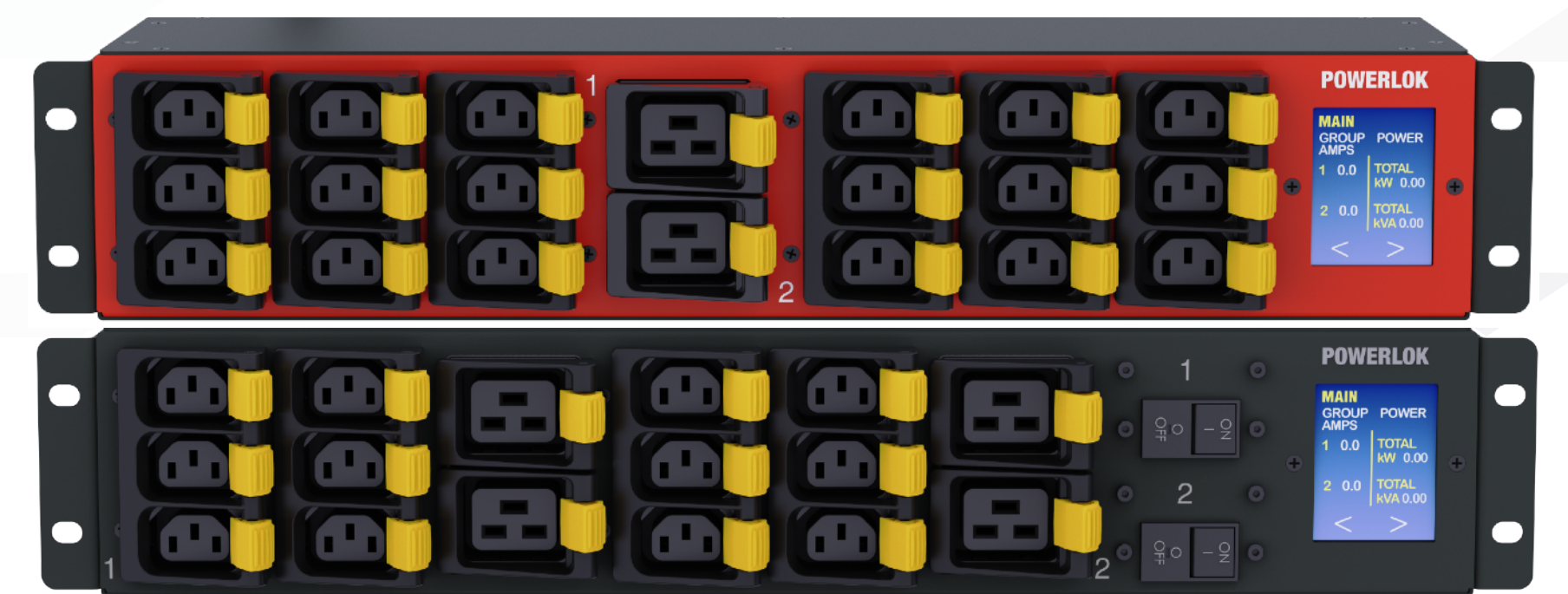
- (6) 36" 30A 415V rPDUs.
- 17.2 kW each.
- 103.2kW in 6.6" width.
- 51.6kW redundant.
- 5+1 for AI applications.
- Angled whip reduces obstruction.

51.6 kW redundant configuration shown at 6.6" width and 2.9" deep.

### Many available configurations

With 1600+ rPDUs available, choose from power type, input method, PDU length, intelligent, receptacle mix, and four colors. Additional colors available on request.

- 36", 41", 78" & 88" standard lengths.
- Horizontal rack mount.
- Hardwire versions available for every model.



2U Horizontal rPDU

### Automated construction

Patented design and construction methods allow for automated assembly. All unreliable mechanical type electrical connections have been eliminated.

- Follows NASA crimp + solder termination standards.
- Eliminates unreliable wiring & termination methods.
- Allows an industry leading power density.

### Reliable, high amperage rPDUs

**60A rPDUs** available up to 34kW per rPDU. Hardwire versions available for customers desiring to make their own upstream connection.

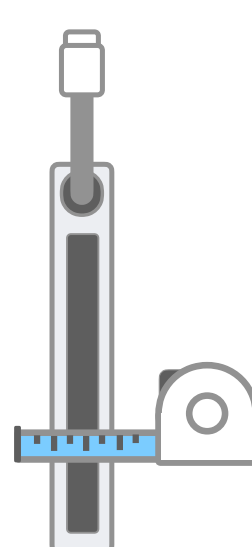
- 208V or 415V Inputs to 72kW per rPDU.
- Never fry a power supply due to loose neutrals.
- 36 Quality procedures for every rPDU.
- Made in USA, TAA compliant, UL62368, CSA C22.2



### Advanced capabilities not found on other rPDUs

From 20A to 125A, Gateview Technologies in-rack PDUs have advanced features and are assembled in the USA.

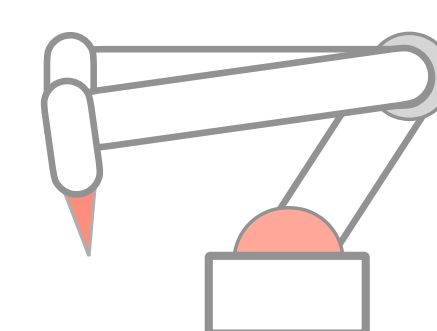
- 0.5% power monitoring accuracy.
- PDU internal temperature reporting.
- Scalable switching technology.
- Angled whip to ease rack exit and not obstruct gear.
- Superior locking receptacles using your IT device cords.



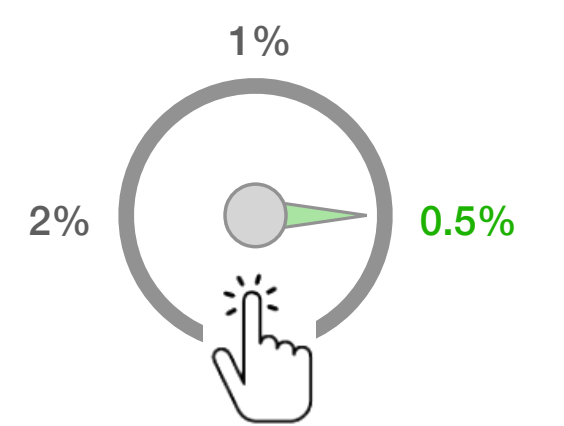
**Slim Profile for 100/120A**  
Only 2.9" x 2.9"



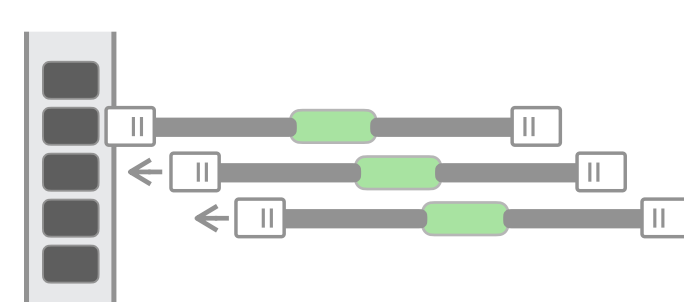
**Reliable Cord Locking**  
Using standard cords



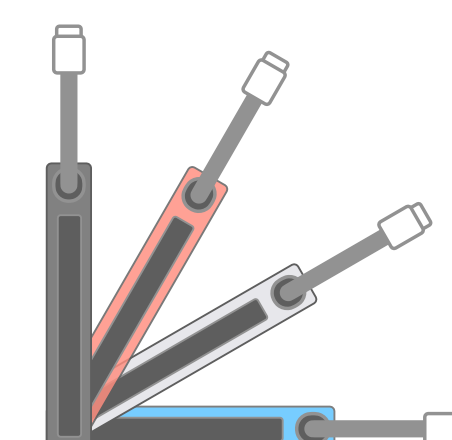
**Robotically Soldered**  
Line input to every outlet



**0.5% Monitoring Accuracy**  
And a buttonless touch-screen



**Scalable Switching**  
Add switching cords when needed



**Choose Colors**  
At no additional cost



**Industry Leading**  
7-year warranty



**Fast-Response PDUs**  
Build-to-order in 3-5 Days

# Intelligent Power

Advanced connectivity and monitoring, scalable switching capability, multiple device deployment and management, full touchscreen display, and internal rPDU temperature monitoring set PowerLOK apart for intelligent rack power.



MAIN		GROUP		LINE		
AMPS	POWER	kW	kVA	AMPS	kW	PF
1A 12.2	TOTAL kW 15.4	1A 2.87	2.93	A 24.0	5.62	0.98
1B 11.8		1B 2.75	2.83	B 20.8	4.80	0.97
2A 10.3		2A 2.38	2.45	C 22.0	5.02	0.95
2B 10.5		TOTAL kVA 16.0	2B 2.42	2.50		
3A 10.8		3A 2.45	2.58			
3B 11.2		3B 2.57	2.68			

PF / VOLTS		SETTINGS		ADMIN	
PF	VOLTS	Alarm Thresholds		Serial Number: 20601190001	
1A 0.98	A/1A&B	Primary Only 80%	<input checked="" type="radio"/>	Firmware Ver: 1.0.0	
1B 0.97	240	Primary Redundant 40%	<input type="radio"/>	Boot Load Ver: 1.10.2	
2A 0.97	B/2A&B	Primary Redundant 45%	<input type="radio"/>	IP Address: 198.168.2.100	
2B 0.97	238	Rotate Display	<input checked="" type="radio"/>	MAC Address: E01B:23:CD:45	
3A 0.95	C/3A&B			Hardware Ver: 1.2.3	
3B 0.96	239			Internal Temp: 37C	

## 0.5% power monitoring plus simplified device configuration

Industry leading PDU power monitoring accuracy and simplified mass deployment using the GV-Power Device Manager application. Mass deploy PDUs with a high degree of accuracy and at much lower cost than legacy products.

### Monitoring Accuracy:

Voltage +/- 0.5% at nominal current within 0.5% from 1A to 30A. +/-1% from 500mA to 1A.

### Complete Monitoring:

Aggregate (kWh, W, VA) plus group/phase monitoring (kWh, W, VA, V, A).

### Network Applications:

HTTP/HTTPS, RESTful API monitoring and visibility, SNMP-V1/V2c/V3 network management. Download robust MIB and API lists for quick integration with DCIM platforms.

### Network Interface/Transport:

Ethernet RJ45 & TCP/IP v4, v6, daisy chain up to 16 PDU capability.

### Multiple rPDU Device Management:

Gateview Device Manager GV-Power manages configurations and firmware for multiple rPDU devices over the network.

**POWERLOK** Rating: 30A 120/208V 3PH Friendly Name: Rack D112-A-PD

**Power Summary**  
Levels NOW  
TOTAL kW / kVA: 7.54 / 8.54  
INTERNAL TEMP: 41 C  
SENSOR A TEMP / Rh: 72 F / 38%  
SENSOR B TEMP / Rh: 71 F / 37%  
SENSOR C TEMP / Rh: 68 F / 35%  
SENSOR D TEMP / Rh: 95 F / 42%

**Power Historical Graphs / Log**  
Levels over past two week period  
TOTAL kW / kVA: PEAK 5.94 kW / 9.45 kVA, NOW 5.76 kW / 5.54 kVA  
INTERNAL PDU TEMP: PEAK 45C, NOW 41C

**Power Settings**  
Amperage Alarm Setting: Primary Only 80% (off), Primary Redundant 40% (on), Primary Redundant 45% (off), Enable Custom (off), Set Custom % (n/a)  
Manage SwitchLok (on)

**Switching Master Control**  
Master Switch: On/Off (on)  
Master Reboot: RUN  
kWh Reset: CLEAR  
Start Delay (s): 0  
Sequence Delay (s): 2  
Off-On Delay (s): 4  
Utility Apply Delay (s): 140

**Events**  
2021-10-14 3:40 PM Line A Over-current cleared (34.5%, 40%)

## Report rPDU internal temperatures for high-heat racks

Internal rack PDU temperature monitoring is standard on every intelligent rack PDU. For rack temperature and humidity monitoring, add a 2, 3, or 4 pack of EnviroLOK sensors.

### Monitoring Accuracy:

0.2C temperature, 2% Rh accuracy.

### Sensor Array:

Daisy chain up to 4 sensors.

### Power Saving:

Battery-less sensors, very low power over supplied cable.

### Communication:

Internal rPDU and sensor data is communicated through the network interface.

### Sensor Application:

Only 1.4" x 1.4" in size, easily attach to rack environment with supplied velcro strap or attach using integrated magnets.

**Environment Historical Graphs / Log**  
Levels over past two week period  
TEMPERATURE: PEAK 78 F, 71 F, 79 F, 109 F, 31 F; NOW 72 F, 62 F, 72 F, 107 F, 35 F  
HUMIDITY (Rh): PEAK 65, 64, 65, 71; NOW 62, 61, 62, 70

**Events**  
2021-10-14 3:40 PM Line A Over-current cleared (34.5%, 40%)  
2021-10-14 2:20 PM Line A Over-current (11A, 10A)  
2021-10-14 2:20 PM Line B Over-current (11A, 10A)  
2021-10-14 2:20 PM Line C Over-current (11A, 10A)  
2021-10-14 2:20 PM PDU Over-temperature Cleared (62C, 60C)  
2021-10-14 2:20 PM PDU Over-temperature (62C, 60C)  
2021-10-14 2:20 PM EL-A Rack Over-temperature Cleared (62C, 60C)

**Environment Historical Log**  
Levels over past two week period  
TEMPERATURE: A, B, C, D, Log Scale  
NOW: 82 F, 62 F, 82 F, 106 F  
TODAY -00:00:10: 82 F, 62 F, 82 F, 106 F (10 sec)  
TODAY -00:00:20: 82 F, 62 F, 82 F, 106 F (1 min)  
TODAY -00:00:30: 82 F, 62 F, 82 F, 106 F (10 min)  
TODAY -00:00:40: 82 F, 62 F, 82 F, 106 F (30 min)  
TODAY -00:00:50: 82 F, 62 F, 82 F, 106 F (1 hr)  
TODAY -00:01:00: 82 F, 62 F, 82 F, 106 F (8 hr)  
-1 DAY -00:00:10: 82 F, 62 F, 82 F, 106 F (1 day)  
-1 DAY -00:00:20: 82 F, 62 F, 82 F, 106 F  
-1 DAY -00:00:30: 82 F, 62 F, 82 F, 106 F

## Intelligent Power Accessories

Advanced connectivity sensors and switching cords allows you to add environment monitoring or scalable switching capability when and if needed. Physically connect sensors that automatically register in the on-board software. Securely connect switching cords and join to rPDU with the simple push of a button.

## PDU accessories for Monitored & Switched Ready models



Maintain rPDU reliability with each switching relay in cord versus 40+ relays in the rPDU.

### ENVIROLOK

- 0.2C temperature & 2% Rh accuracy
- Daisy chain 4 sensors per PDU
- Magnetic or velcro attachment
- Only 1.4in x 1.4in x .81in size
- Low power over supplied cable
- Battery-less sensors



### SWITCHLOK

- Add Switching if or when needed
- Switching relay in-line with cord
- Allows PDU to retain slim profile
- Allows PDU to maintain reliability
- Easily join PDUs for A/B switching



Patented switching technology

## Advanced switching technology

Maintain reliability and flexibility. PowerLOK Switched Ready Rack rPDUs have relays removed from the rPDU to keep reliability high and the profile slim. Add switching cords only when or if needed.

### Adding PDU Switching Cords to PowerLOK:

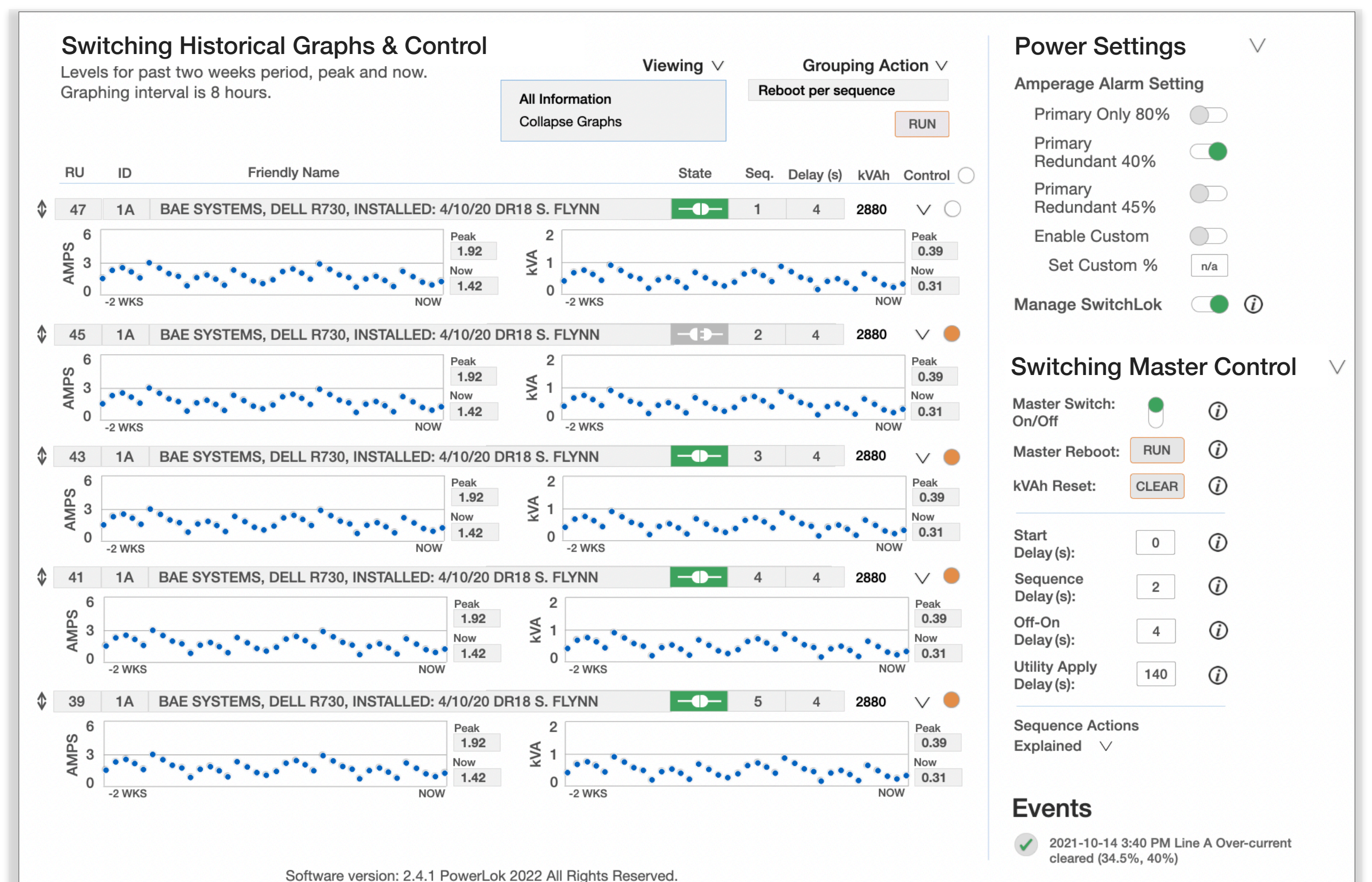
To join, simply depress PDU switching cord button for 2 seconds and release when green LED changes from fast to slow flashing. Select JOIN in the Manage SwitchLOK window of the software.

### Naming & Settings:

Once joined, you can enter a friendly name. Settings are done individually or performed for all joined switching cords at once. Join PDU B to PDU A in Admin for dual AC fed servers.

### Ease of Use:

Reboot, on and off sequencing actions are explained in the software. Select all or select individually the switching cords you desire to perform an action with, then select RUN.



## Configure, update and manage multiple devices on a network

GV-Power Device Manager (PDM) is a free and comprehensive application for securely and efficiently configuring and maintaining multiple devices on the network.

### Discover Devices:

All PowerLOK Rack PDUs on the network with the same credentials will be searched for and discovered by IP addresses.

### Configuration Updates:

All admin, rack PDU settings, environment settings and switching settings are updated. IP addressing and rack PDU friendly name are not updated.

### Ease of Use:

PDM provides quick links to manage all your devices. The most up to date rPDU device firmware is loaded into PDM. Simply enter an IP range or specific address. Copy a desired rack PDU configuration to your clipboard and paste into PDM. Select Push Updates.

