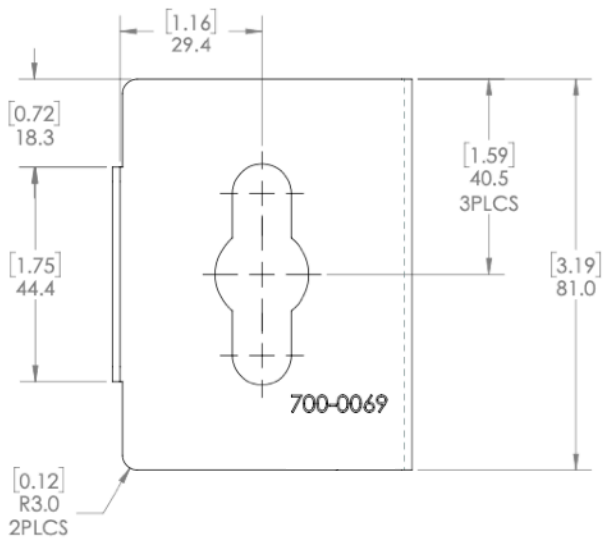
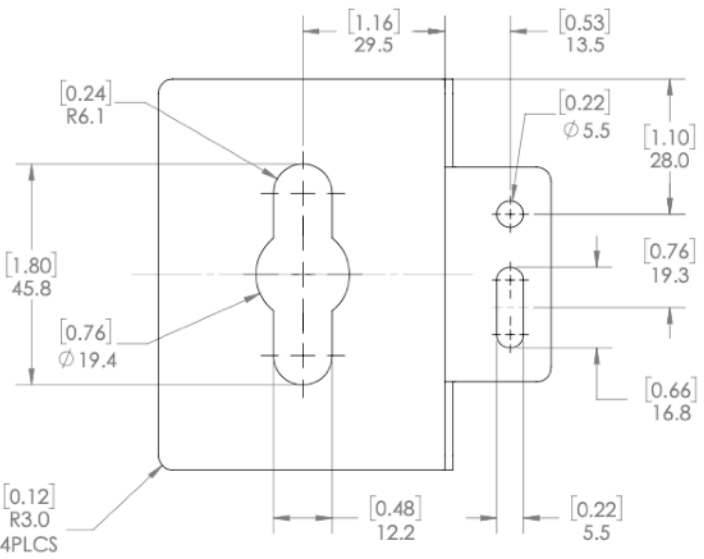
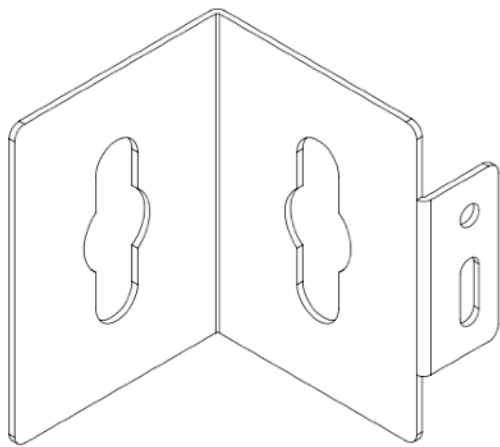
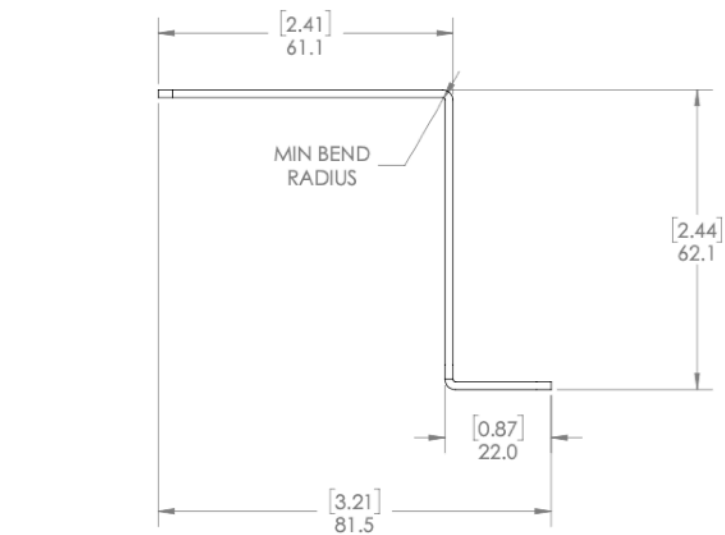
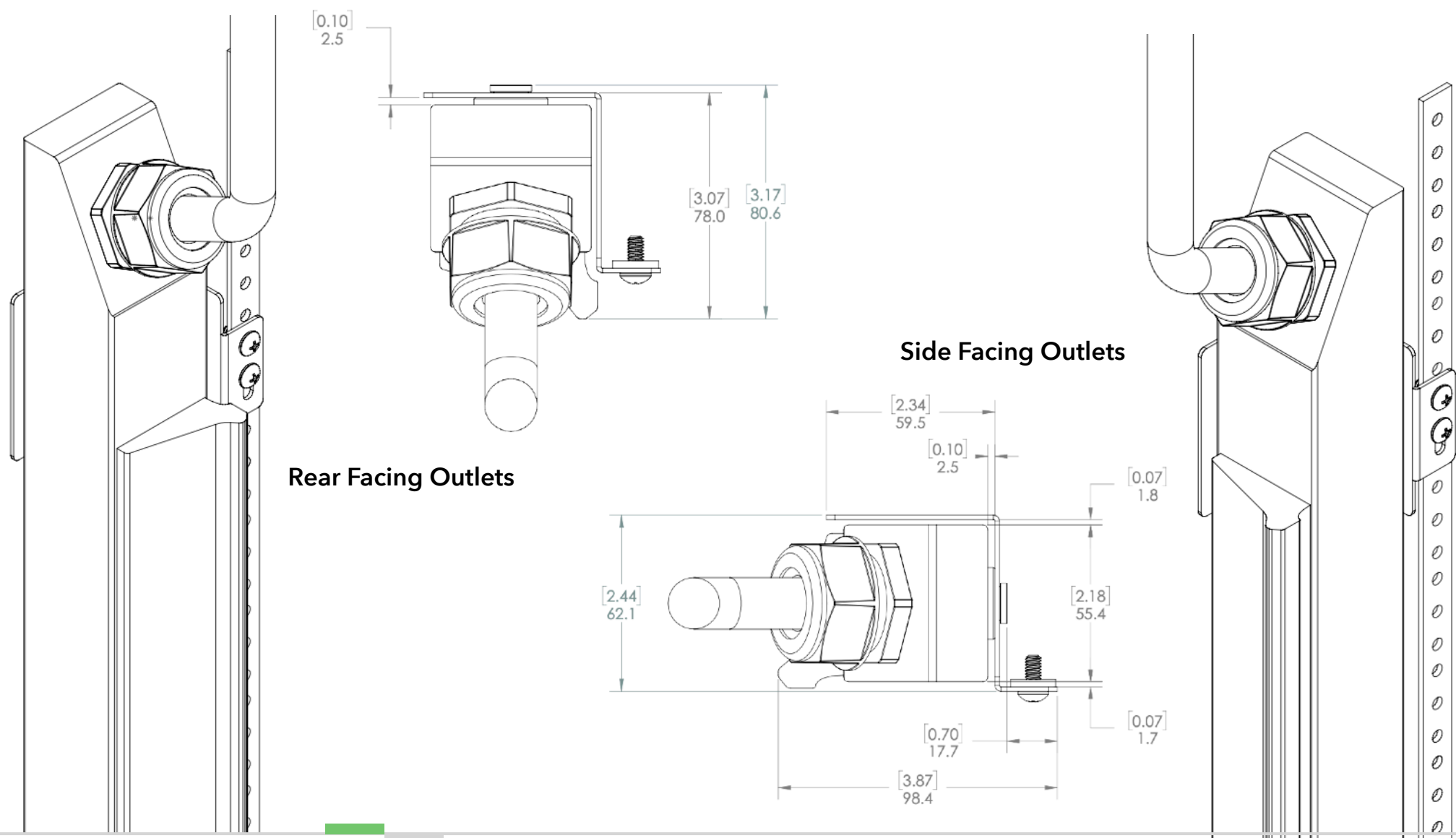


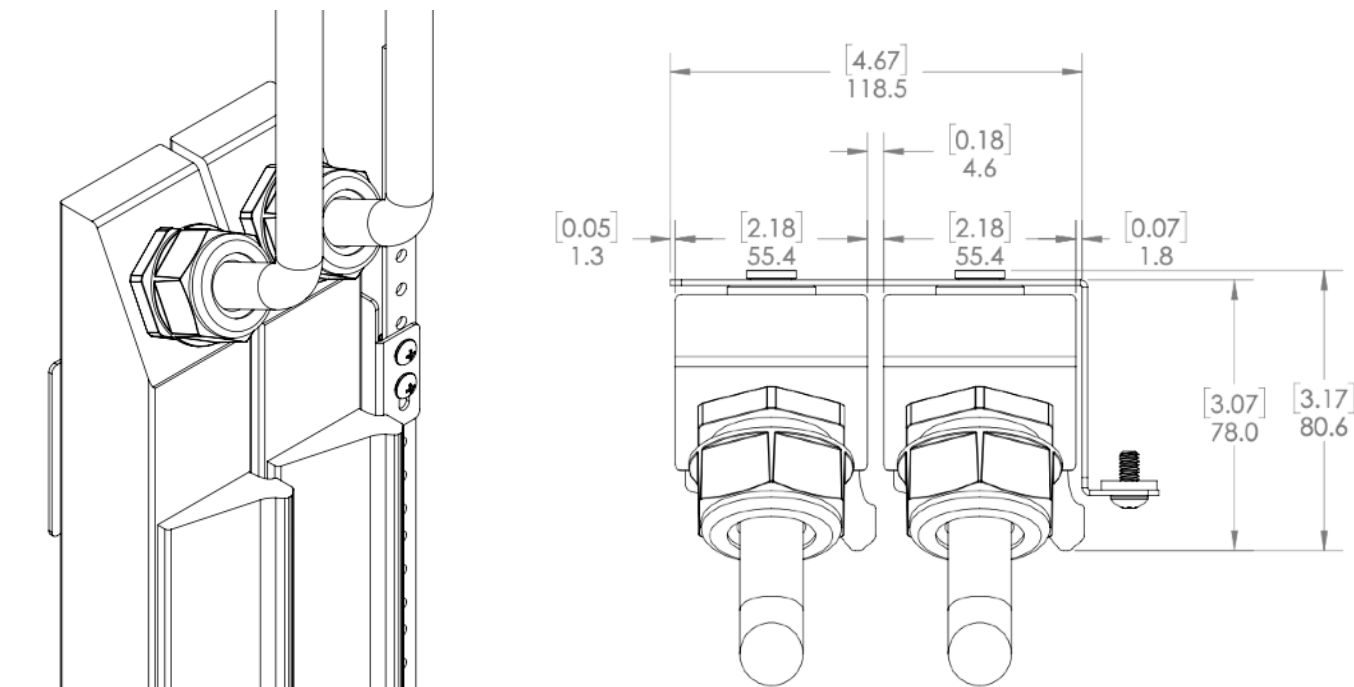
700-0069

Turn rPDU to a rear or side facing position using EIA rails.

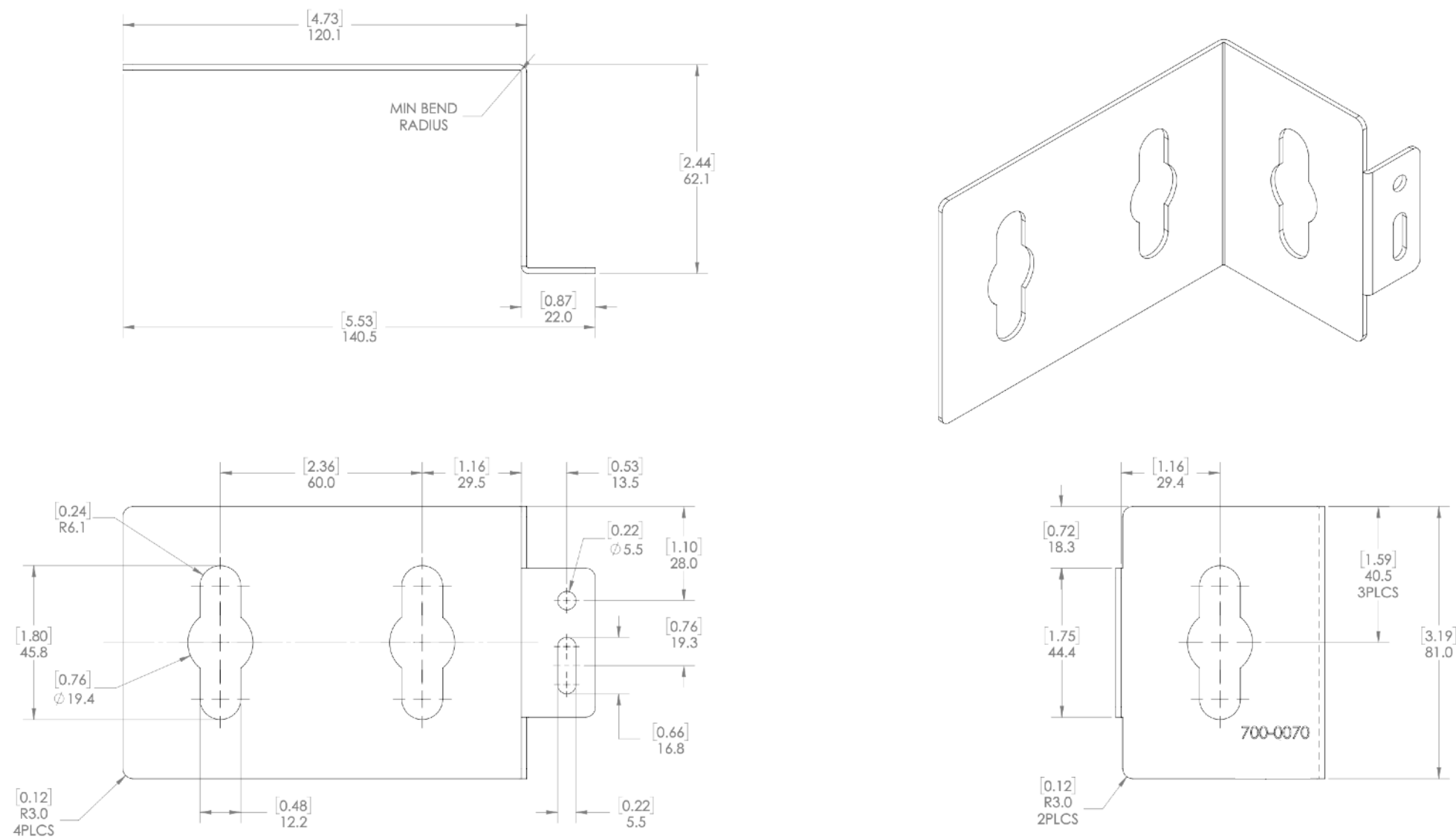


700-0070

Turn two rPDU's to a rear facing position using EIA rails.

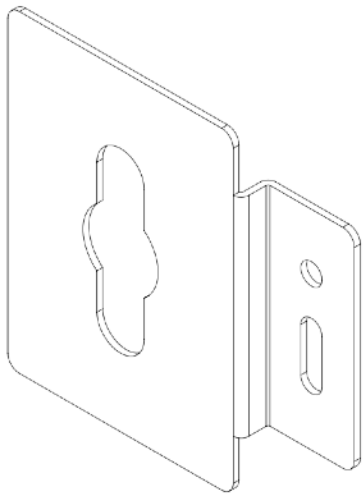
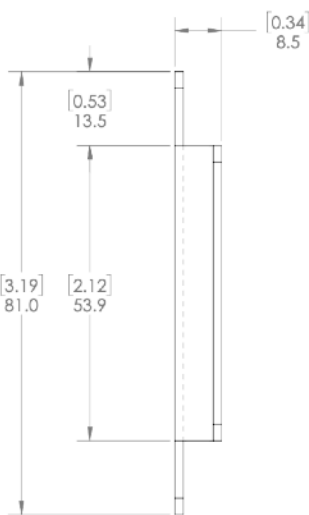
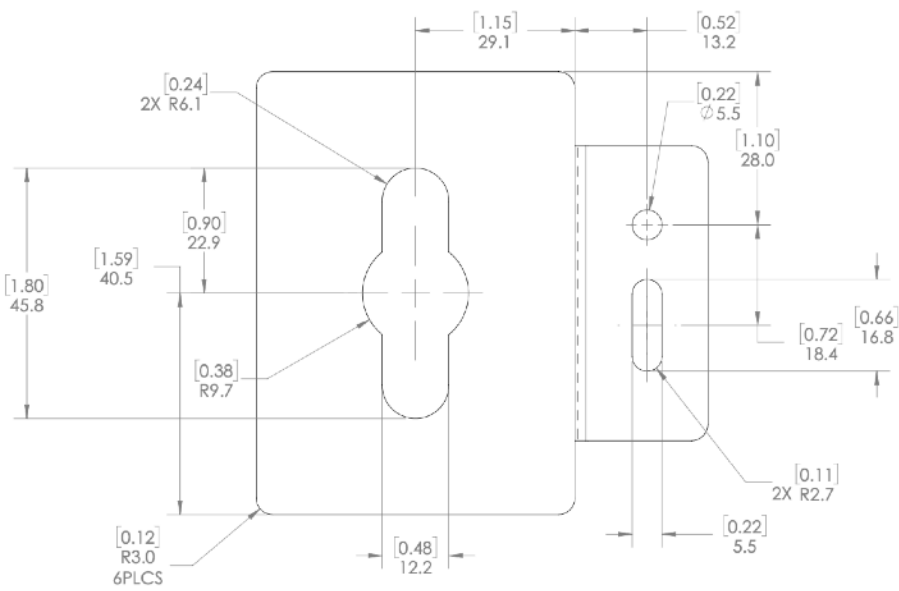
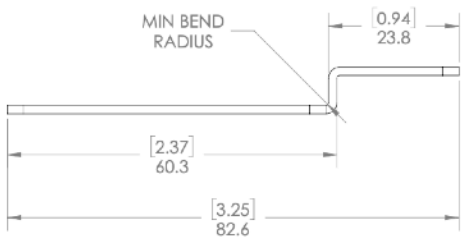
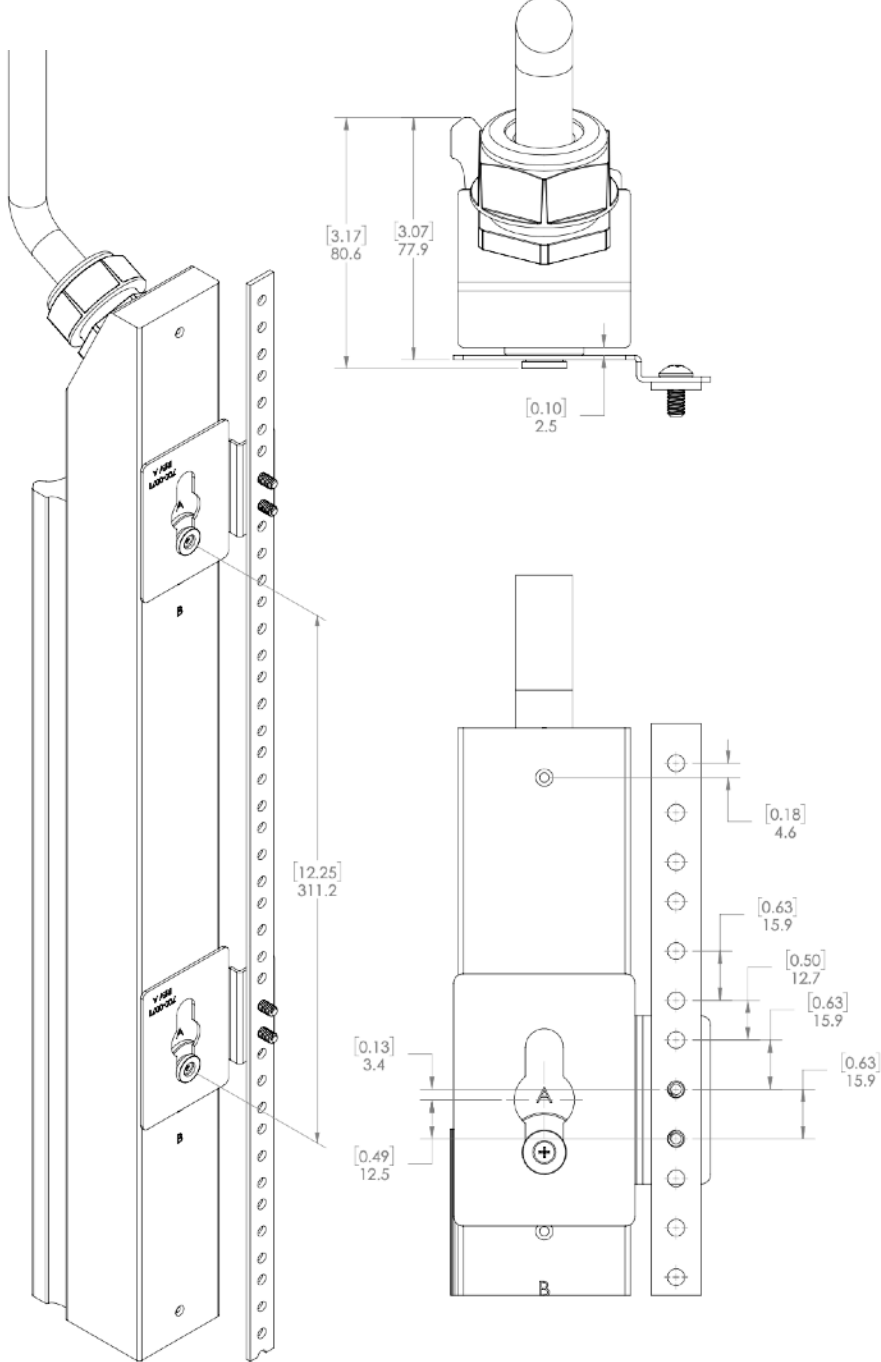
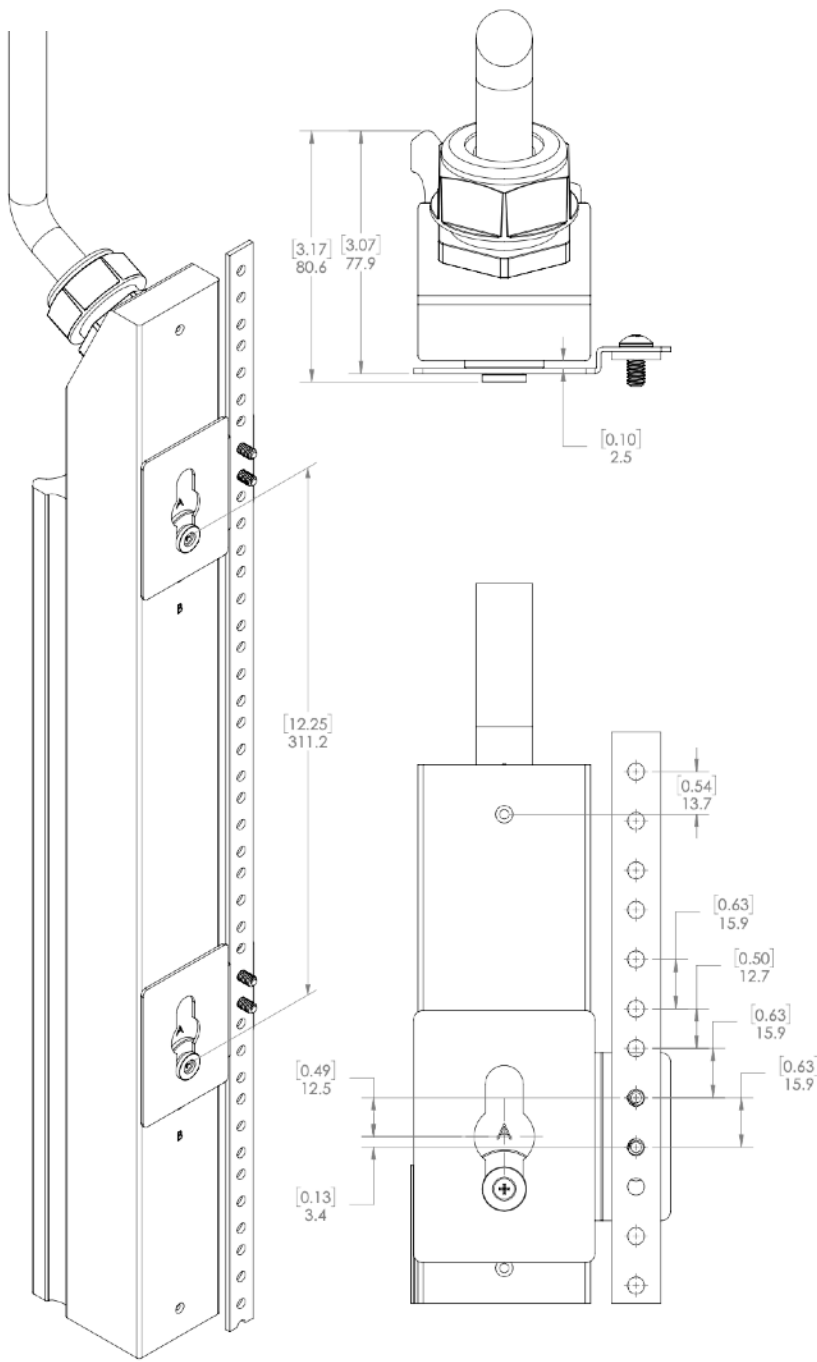


Rear Facing Outlets



700-0071

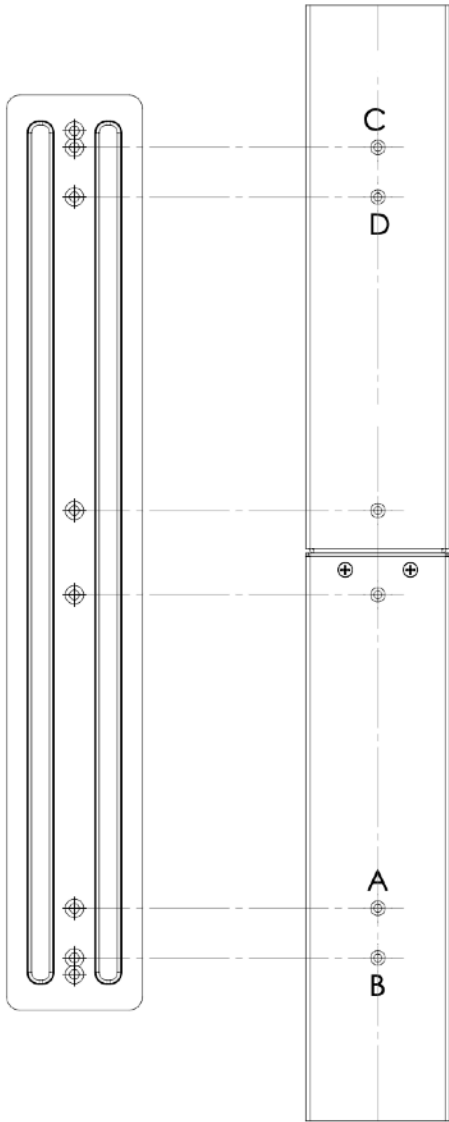
Turn rPDU to a rear facing position using EIA rails. Add multiple brackets for vertically stacking shorter rPDUs.



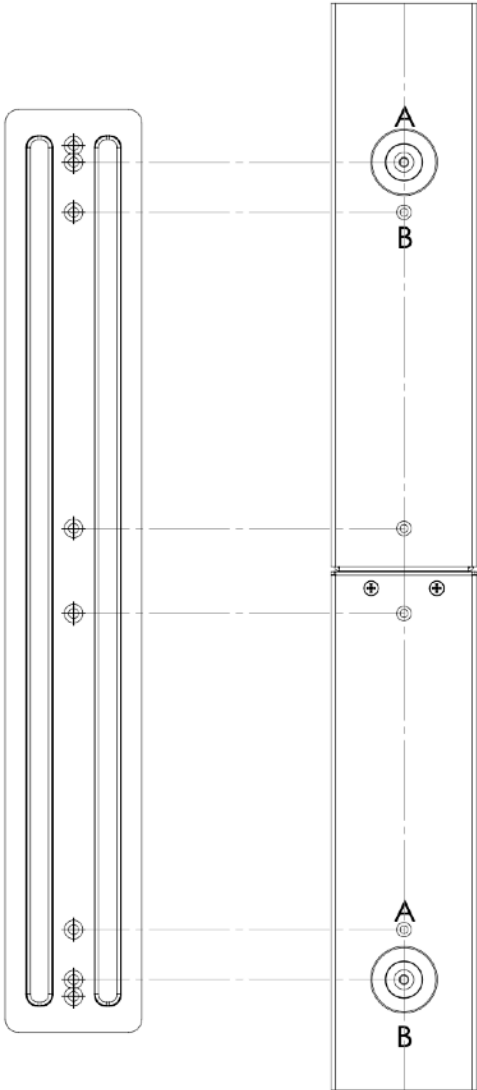
700-0043

Join two or three rPDU's together before placing in rack as a single rPDU.

41" Bracket Position



36" Bracket Position



24" Bracket Position

