

Product Manual

Ver. 1.3

POWERTAP



GATEVIEW
TECHNOLOGIES

Powering IT starts with reliability™

Table of Contents

Introduction.....	3
Safety Precautions.....	3
Equipment Grounding.....	4
Regulatory Compliance	4
Product Specifications	4
Mechanical Specification.....	5
Outline Drawing.....	5
Modular Base Box Specification	6
Electrical Ratings	6
Electrical Wiring Diagram – Single Phase Output	7
Electrical Wiring Diagram – Three Phase Output	7
Installation Notes	8
Installation Diagram & Mounting Flange Detail.....	9
Removing & Adding Plug-In Modules.....	10
Packaging.....	10
Limited Warranty.....	11

Introduction

PowerTAP Modular Power Unit (MPU) is a next generation IT power distribution product for the mission critical industry. PowerTAP MPUs are engineered, tested, and manufactured in the United States. To ensure the greatest reliability of our products in 24/7 mission critical applications, Gateview Technologies uses precision automated manufacturing processes.

PowerTAP is an indoor power distribution product used to distribute power from a remote power panel (RPP) or electrical panel board. PowerTAP is designed for use in an IT environment such as a data center, for example, where flexibility is required to periodically change out receptacle type. This product is for North America only.

All MPUs will be fed from 60Amp breakers located in Customer's RPP or panel board. Every PowerTAP includes the MC cable in lengths specified by the user from 8FT to 68FT. There is an additional 10FT of MC cable with jacket removed for easy connection to an RPP or electrical panel board.

Safety Precautions

Specific safety precautions for this product are as follows:

- All precautions should be taken to guarantee a safe work and operational environment. General safety precautions must be observed during all aspects of operation of equipment described in this document. Failure to comply with the safety warnings, procedures, and guidelines presented in this document is in violation of the safety standards of design, manufacture, and intended use of this equipment.
- You are responsible for following the safety guidelines and warnings presented in this document for this equipment. Individuals using Gateview MPUs are expected to follow all the noted warnings and safety precautions necessary for safe operation of the equipment in your environment. Gateview Technologies assumes no liability for failure to comply with these requirements.
- MPUs are intended for indoor use only in a controlled environment that adhere to the operating temperatures specified by this product. Any use outside of these constraints will void the warranty.
- MPUs are rated for 208/240VAC. Caution must be taken to assure that the rating of the MPU and the supply voltage match.
- **Total capacity of equipment connected to the MPU CANNOT EXCEED the MPU maximum load rating.**

WARNING



HAZARDOUS VOLTAGE AND ENERGY LEVELS ARE PRESENT IN THIS PRODUCT. INTERNAL CIRCUITS CAN HAVE HAZARDOUS VOLTAGES PRESENT EVEN WITH CIRCUIT BREAKERS IN THE OFF POSITION. DO NOT OPERATE THE PRODUCT WITH THE COVER REMOVED.

Professionals installing and operating MPUs are advised of the following:

- Do not try to modify the MPU in anyway, including the input whip, enclosure, or receptacles.
- Do not drill into the MPU enclosure.
- Although the RP face panel is removable, there are no serviceable parts inside the MPU.
- Do not attempt to use the MPU if any part of it is damaged.
- MPUs contain magnetic-hydraulic circuit breakers. MPUs must be mounted vertically.
- Do not mount the MPU to an unstable surface.

Equipment Grounding

To minimize electrical shock hazard, the MPU enclosure is connected to electrical earth ground. The input power cable must be connected to an industry electrical code compatible breaker and facility earth ground.

Regulatory Compliance

MPUs have been safety tested and certified to the following standards for product safety:

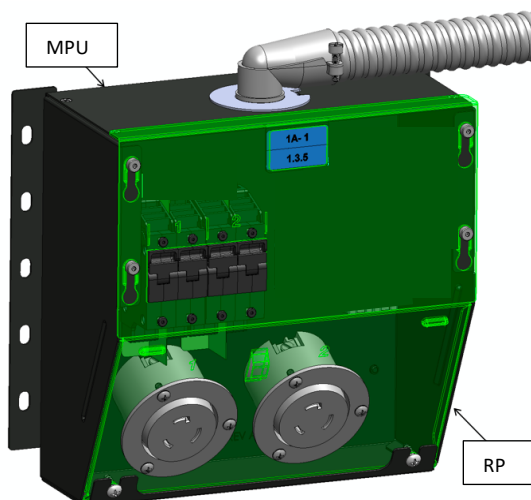
- UL 62368-1
- CAN/CSA 22.2 No. 62368-1
- Canada ICES-003 (A) / NMB-003 (A)
- RoHS compliant

Product Specifications

The following section provides mechanical and electrical specifications of the various MPU models. FOR THE MBB, THE ONLY VARIABLE IS THE MC CABLE LENGTH AND IS REPRESENTED IN THE MODEL NUMBER.

MPU Models	Model Description
MPU-208-XX-N	MODULAR POWER UNIT, 120-240V, XXFT WHIP, NO RP
RP-BLANK-A	RECEPTACLE PANEL, BLANK
RP-L5200-2	RECEPTACLE PANEL, 2-L5-20R, 20A 120V
RP-L5300-2	RECEPTACLE PANEL, 2-L5-30R, 30A 120V
RP-L6200-2	RECEPTACLE PANEL, 2-L6-20R, 20A 208V
RP-L6300-2	RECEPTACLE PANEL, 2-L6-30R, 30A 208V
RP-L2120-1	RECEPTACLE PANEL, L21-20R, 20A 120/208V
RP-L2130-1	RECEPTACLE PANEL, L21-30R, 30A 120/208V
RP-L1530-1	RECEPTACLE PANEL, L15-30R, 30A 208/240V
RP-C8369-1	RECEPTACLE PANEL, CS8369C, 50A 208/240V
RP-460R9-1	RECEPTACLE PANEL, 460R9W, 60A 208/240V

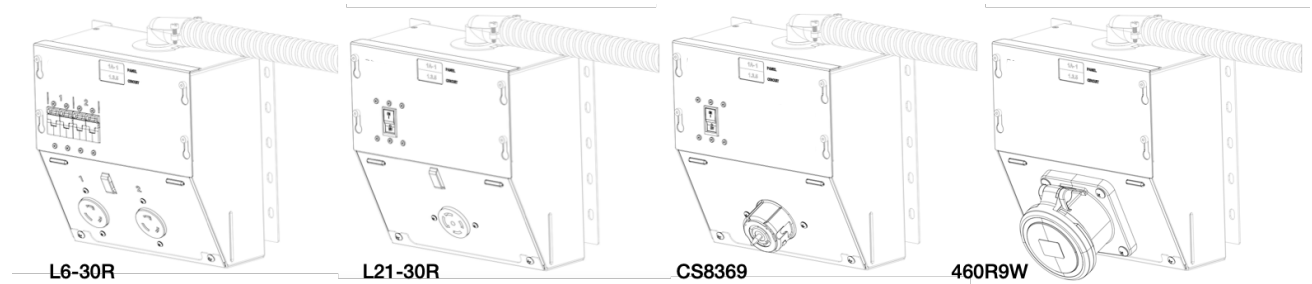
MPU - Modular Power Unit



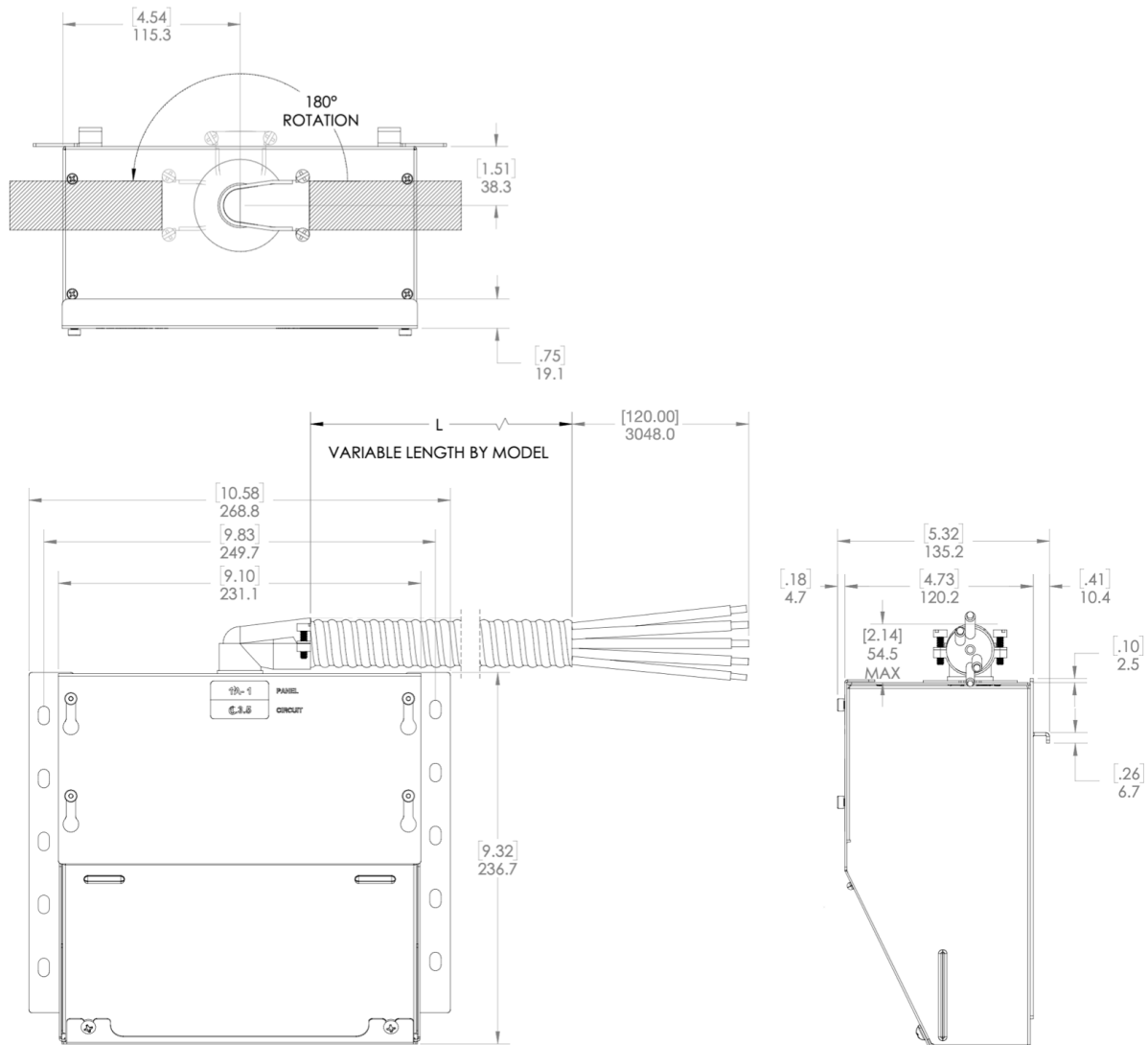
Mechanical Specification

Chassis dimensions in inches and (mm). See individual specifications for complete outline drawing and added depth due to higher amperage receptacle type. MPU mounting flange adds to specified width.

Height: 9.32 (236.73) **Width:** 9.10 (231.14) **Depth:** 4.90 (124.46)



Outline Drawing



Modular Power Unit Specification

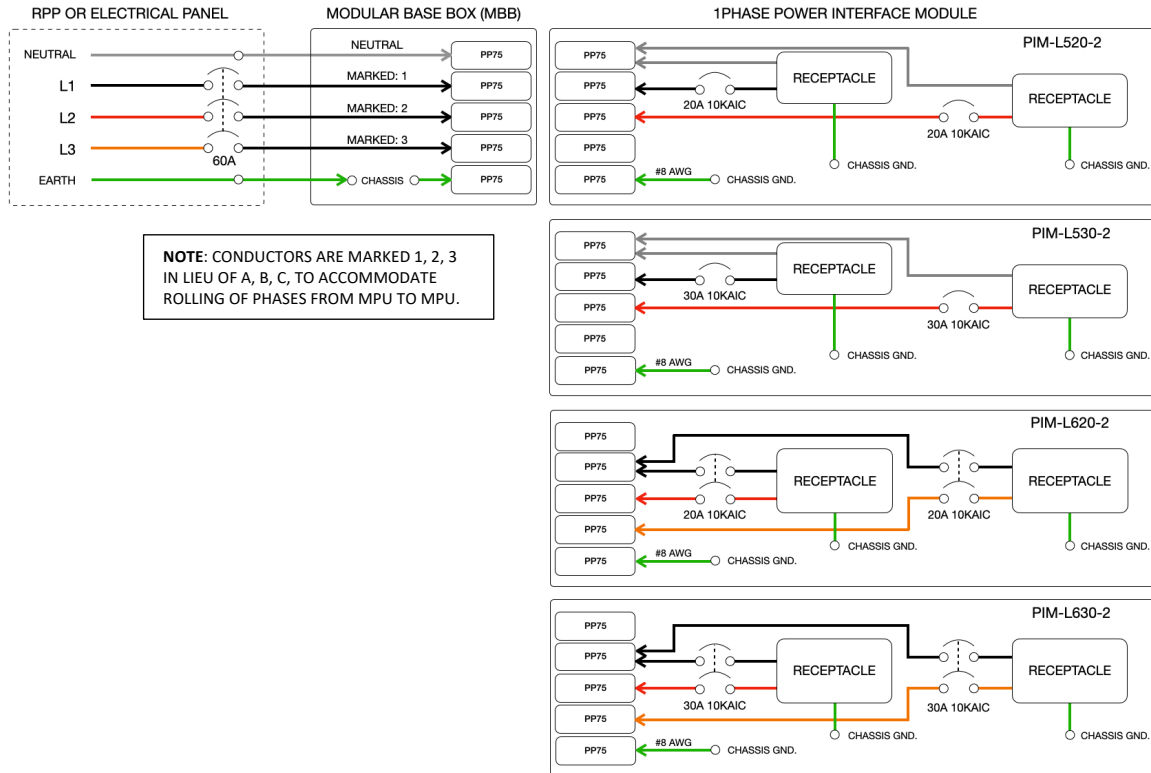
MPU FEATURE / DESCRIPTION	
DESCRIPTION	MODULAR POWER UNIT, BASIC, 60A, 120-240V, 5-WIRE MC CABLE, 180 DEGREE ROTATABLE FEED, 10FT JACKET REMOVED, TAA COMPLIANT
POWER	RP DEPENDENT: 20A 120V 1PH TO 60A 208/240V DELTA 3PH (17.2 kW MAXIMUM CONDITION).
CABLE TYPE	5-WIRE 6AWG MC CABLE, LENGTH PER MODEL SELECTED.
CABLE PREPARATION	ADDITIONAL 10FT OF CABLE ADDED TO THE SELECTED LENGTH HAS JACKET STRIPPED AND WIRES PREPARED FOR BREAKER CONNECTION.
CERTIFICATION	INTERTEK-ETL CERTIFIED TO UL62368-1, CSA CS22.2, RoHS COMPLIANT.
UNIT SIZE	9.1" X 9.3" X 4.9"
MATERIAL	HEAVY DUTY STEEL POWDER COAT PAINT, BLACK.
MOUNTING	.060" FLANGE. USE 1/4-20 UNISTRUT HARDWARE. FLANGE SLOTS ARE ON A 1-5/8" SPACING MATCHING UNI-STRUT WIDTH.
WHERE MADE	USA, TAA COMPLIANT.
WARRANTY	5-YR FROM DATE OF MANUFACTURE, REPAIR OR REPLACE.
OPERATING ENVIRONMENT	0-50C (32-122F), 5-95% RELATIVE HUMIDITY, 0-10,000ft (0-3000 METERS) ELEVATION.
STORAGE ENVIRONMENT	-25-65C (-13-149F), 5-95% REALTIVE HUMIDITY, 0-10,000ft (0-3000 METERS) ELEVATION.

Electrical Ratings

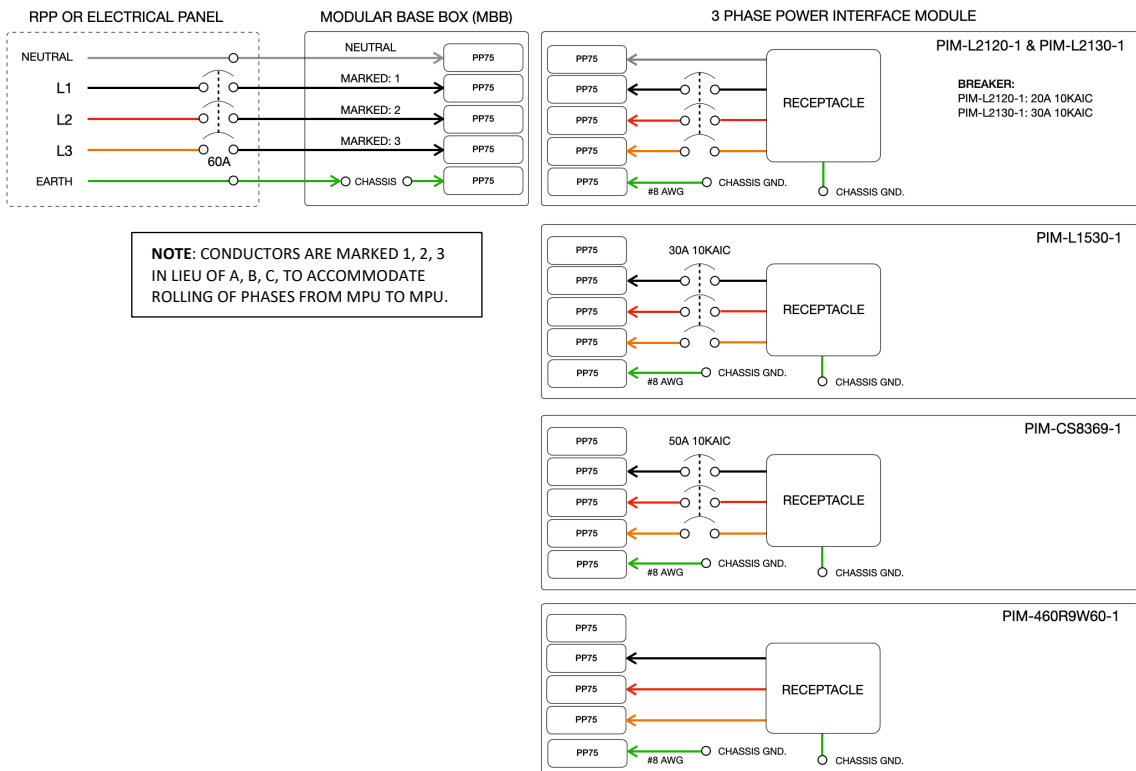
MPU Configuration	Line Current Rating	UL / CSA Line Current Rating*	Number of Wires	Internal Wire Gauge	Operating Temperature
MBB, 120-240V	60A	48A	5	6	0°C - 40°C (32°F - 104°F)
MBB + 120V PIM	20A	16A	3	10	
	30A	24A			
MBB + 208V PIM	20A	16A	3	10	
	30A	24A			
MBB + 120V/208V WYE 3PH PIM	20A	16A	5	10	
	30A	24A			
MBB + 208V DELTA 3PH PIM	30A	24A	4	10	
	50A	40A		6	
	60A	48A			

* Per the National Electrical Code (NEC) and Canadian Electrical Code (CEC) requirements, when in service, the line current is to be limited to 80% of the MPU's receptacle rating. MPUs rated 20A-50A contain circuit breakers for protection. The circuit breakers are UL-489 Listed and rated at 10kAIC.

Electrical Wiring Diagram – Single Phase Output



Electrical Wiring Diagram – Three Phase Output



WARNING

PowerTAP MPU is not hot-swappable. Hazardous voltages are accessible inside when the RP is removed. There is no indicator that the MPU has power. The electrician must verify the device is safe before removing the RP.

Installation Notes

Installation of MPUs into an IT facility is performed using MPU mounting flanges to attach to metal framing system such as Unistrut brand, or any surface or panel structurally equipped to mount electronic devices.

- PowerTAP MPU is installed overhead or under a raised floor.
- PowerTAP MPU has integral mounting flanges for bolting to a wall, panel, or to Uni-strut. ENSURE HOOKS SIT IN A RECESSED AREA BEFORE FASTENING UNIT.
- The slots in the MPU flanges are on 1-5/8" spacing to work with 1-5/8" metal framing that can be stacked if desired. Only two locations on each MPU mounting flange are required to mount the MPU.
- Hooks that are integral to mounting flanges are provided to ease attachment of the MPU to metal framing such as Unistrut brand framing. ENSURE HOOKS ARE RECESSED IN UNISTRUT BEFORE FASTENING UNIT.
- PowerTAP MC cable has a direct run back to the RPP or electrical panel.
- The MC cable has 10FT flying leads that extend beyond the outer metal jacket for preparation and attachment to the power panel's 60A breaker.
- ROLLING OF PHASES IS REQUIRED TO ENSURE EVEN PHASE TO PHASE LOADING OF RPP AND PANEL BOARD.
- A 180-degree rotating whip is permanently attached to the MBB and is ordered with adequate length to reach a remote power panel (RPP) or any panel board appropriately sized for the MPU.
- TO ALLOW FOR A CLEAN MC CABLE SERVICE LOOP THE MC CABLE SHOULD EXIT POWERTAP MPU IN THE OPPOSITE DIRECTION OF THE RPP and loop the cable 180 degrees back in the direction of the RPP to allow the service loop.
- POWERTAP POWER-INTERFACE-MODULES (RPS) ARE NOT HOT-SWAPPABLE. HAZARDOUS VOLTAGES ARE ACCESSIBLE WHEN THE RP IS REMOVED. THERE IS NO INDICATOR POWERTAP MPU IS ENERGIZED. AN ELECTRICIAN MUST VERIFY THE UNIT IS DEENERGIZED AND FREE OF HAZARDOUS VOLTAGES BEFORE REMOVING OR INSTALLING THE RP.
- Once a RP is in place and secured, and the power has been energized at the RPP or electrical panel, the PowerTAP MPU is ready for use.

1

2

3

4

5

PANEL
CIRCUIT

UNIT MOUNTING FLANGES ARE RUGGED. TO PREVENT BASE BOX DISTORTION ENSURE UNIT IS ON A FLAT PLANE BEFORE FASTENING.

ENSURE CLEARANCE WHEN FASTENING MPU. AVOID STRUT MOUNTING HARDWARE WHEN FASTENING.

TORQUE OF HARDWARE TO 6-7 FT-LBS RECOMMENDED. DO NOT OVERTIGHTEN MPU MOUNTING HARDWARE.

1-5/8" UNISTRUT LOCATION OPTIONS

Technical drawing of a vertical mounting rail with dimensions in inches and millimeters. The drawing shows a side view of the rail with a series of mounting holes. The dimensions are as follows:

- Overall height: 8.54" (216.8 mm)
- Top flange width: .38" (9.5 mm)
- Top flange thickness: .28" (7.1 mm)
- Top flange offset: .47" (11.9 mm)
- Distance from top to first hole: 1.08" (27.5 mm)
- Distance between holes: 1.63" (41.3 mm)
- Number of holes: 5

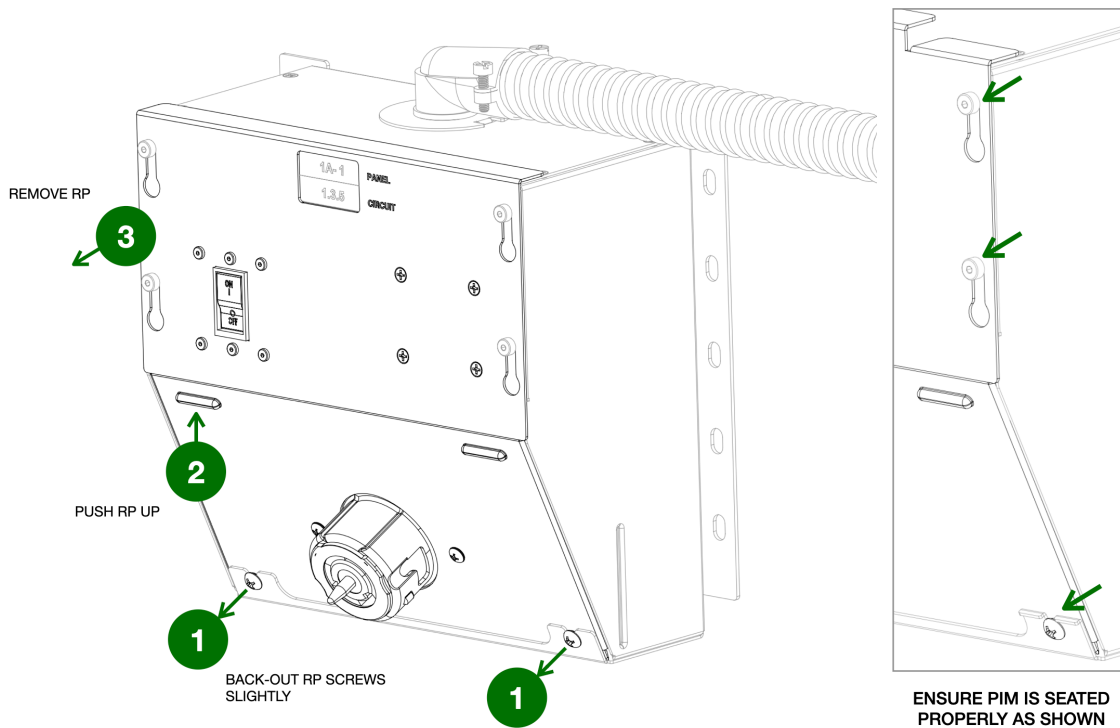
A callout box with an arrow pointing to the mounting holes contains the text:

ENSURE MOUNTING HOOKS SIT IN A RECESSED AREA OR INTO UNISTRUT BEFORE FASTENING UNIT.

Removing & Adding Plug-In Modules

MPUs are shipped with a RP attached. To remove a RP, follow these steps:

1. When backing-out RP screws only back-out enough to clear the screw mounting flange.
2. When lifting the RP please note color coded internal connections require attention.
3. When removing the RP the MBB shoulder screws need to align with the RP key slot holes.
4. When installing a new RP reverse this procedure.



Packaging

MPUs are shipped in 200# double-wall corrugated cartons. MPUs ship with blank or RPs attached, and carton labeled for each individual item.

MPU	Units Per Package	Dimensions	Approx. Ship Weight (Lbs.)	Notes
MPU-XX	1-PACK	18.75" L x 18.75" W x 11.75" D	21.9 (10') - 44.1 (48')	SHIPS WITH ATTACHED WHIP TO SPECIFIED ORDERABLE LENGTH AND ORDERED RP TYPE.
	2-PACK	36.75" L x 18.75" W x 11.75" D	43.8 (10') - 88.2 (48')	
RP 20-50A	2-PACK	10.50" L x 9.75" W x 10.0" D	7.8	FOR RP FIELD REPLACEMENT
	4-PACK	20.75" L x 9.75" W x 10.0" D	15.4	
RP 60A	1-PACK	10.50" L x 9.75" W x 10.0" D	5.0	
	2-PACK	20.75" L x 9.75" W x 10.0" D	9.8	

Limited Warranty

Warranty Replacement Procedure: All product warranty procedures are conditional upon the warranty information set forth in Gateview Technologies Terms and Conditions for a term of three (3) years from the shipment of the product. Gateview Technologies will provide a replacement product if it is defective in accordance with the following: This warranty does not apply to normal wear and tear or damage resulting from misuse, abuse, or neglect. No service or maintenance is required and there are no serviceable parts inside of the product. Do not attempt to modify the MPU or this will void the warranty.

Since individual applications are subject to great variation, the customer must determine whether this product is suitable, adequate, or safe for the use intended. Gateview Technologies makes no representation or warranty as to the suitability of these products for any specific application and Gateview Technologies is not responsible for equipment damaged by incorrect application on the part of the customer.

The customer will incur the cost of shipping the defective product to Gateview Technologies, and, if a replacement is necessary, Gateview Technologies will reimburse the customer for shipping and subsequently ship a replacement product within seven (7) days of receipt of the defective product. If replacement of the product is not necessary, Gateview Technologies reserves the right to deny reimbursement for the shipping of the product returned from the customer.

Notices

Version 1.3B Copyright © 2025 Gateview Technologies, Inc.

All Rights Reserved

This product manual is protected by copyright and all rights are reserved.

Gateview Technologies reserves the right to update the product manual at any time. In no event shall Gateview Technologies be liable for damages resulting from any omission in this document.

Gateview and POWERTAP logos are registered trademarks of Gateview Technologies. Use of the logos for commercial purposes without the prior written consent of Gateview Technologies may constitute trademark infringement and unfair competition in violation of federal and state laws.